



**Sand Monitoring Services**  
**Well Service Applications of**  
**Sand & Solids Monitoring Technology**



**Sand solutions made simple**



# Company Profile & Clients

## Quality driven company providing:

- Tailored sand solutions
- Leaders in Acoustic and Intrusive sand monitoring
- Specialist well services
- Production optimisation
- Dedicated engineering team.



**Marathon  
Oil Corporation**

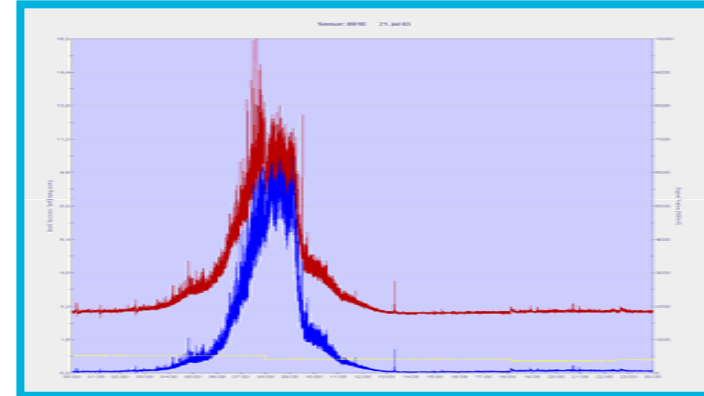
ISO 9001:2000 FS504551

## IPE Group:

- Sand Management Strategies
- Sand Risk Evaluation
- Data Management
- Vendor Management
- Real time production optimisation
- Operating Guidelines

## Field Services Group:

- Acoustic & Intrusive Services for:
- Commissioning
- Well Test
- Frac Operations
- CT Work Over
- UBD





# Field Services

## Sand & Solids Monitoring Applications

### SMS Field Services

Unique Real Time Monitoring :

- Acoustic
- High Res. ER Intrusive

Applications:

- Frac Ops
- Well Test
- Production Tests
- CT Work Over
- UBD



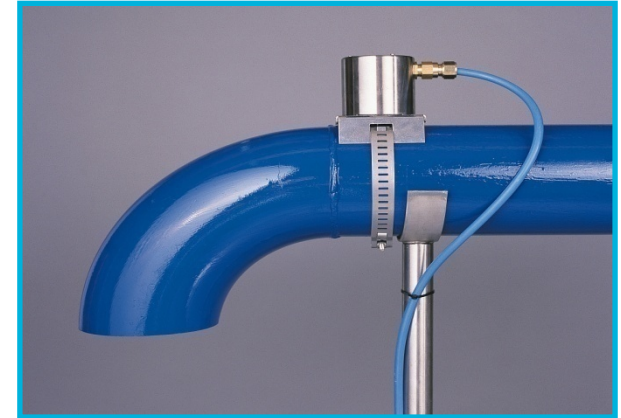


# Field Services

## Acoustic & Intrusive Packages

### Acoustic Systems

- Instant Response
- Real Time Data
- No Temperature Effects



### Intrusive Systems

- Highest Resolution on Market
- Excellent Temperature Compensation
- Increased safety & Reliability





## Sand & Solids Monitoring Technology

- Acoustic Monitoring
- Intrusive Monitoring

### Case Studies

- Frac Ops
- Well Test
- Production Test
- Milling / Sand Bridge Clean Out





# Sand Monitoring Technology

## Well Service

### Real Time Acoustic System

- Acoustic Sand Sensors
- Passive Microphone Transducers
- Filters to isolate Sand Noise from Mechanical
- Rapid Response to Sand Production

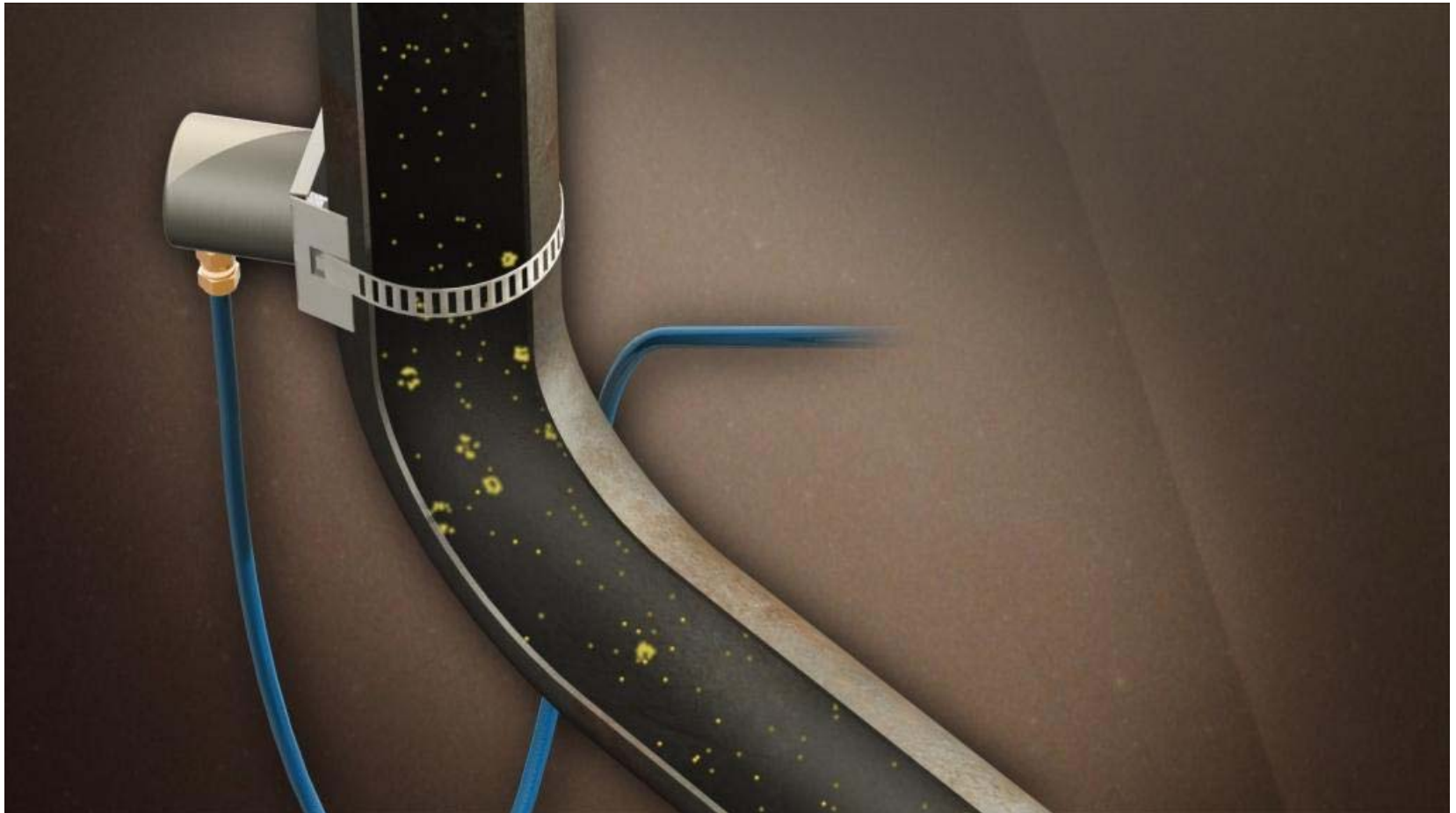




# Sand Monitoring Technology

## Video Clips - Acoustic

### Acoustic Sand Monitoring





# Sand Monitoring Technology

## Acoustic Systems

### The Good & The Bad

#### Pros

- High Sensitivity to sand production.
- Instantaneous response to sand production.
- Low power consumption.
- Ease of Installation.
- No Temperature Dependency Effects.
- Reduced risk and cost.
- Ideal solution for HP/HT wells.
- No pressure bearing seal failure risk.
- Reduced manual handling.
- No inherent component design problems.
- Can be installed as Pig Detectors

#### Cons

- Signal interpretation –chokes, slug flow or sand?
- Calibration required for accurate sand production.
- Sand impingement on pipe wall in low velocity, high viscous flow?



# Sand Monitoring Technology

## Intrusive ER Systems

- Intrusive Electrical Resistance Probes
- Non Corrosive Elements
- Variety of Element Materials
- Variety of Probe Styles





# Sand Monitoring Technology Well Service High Resolution ER System

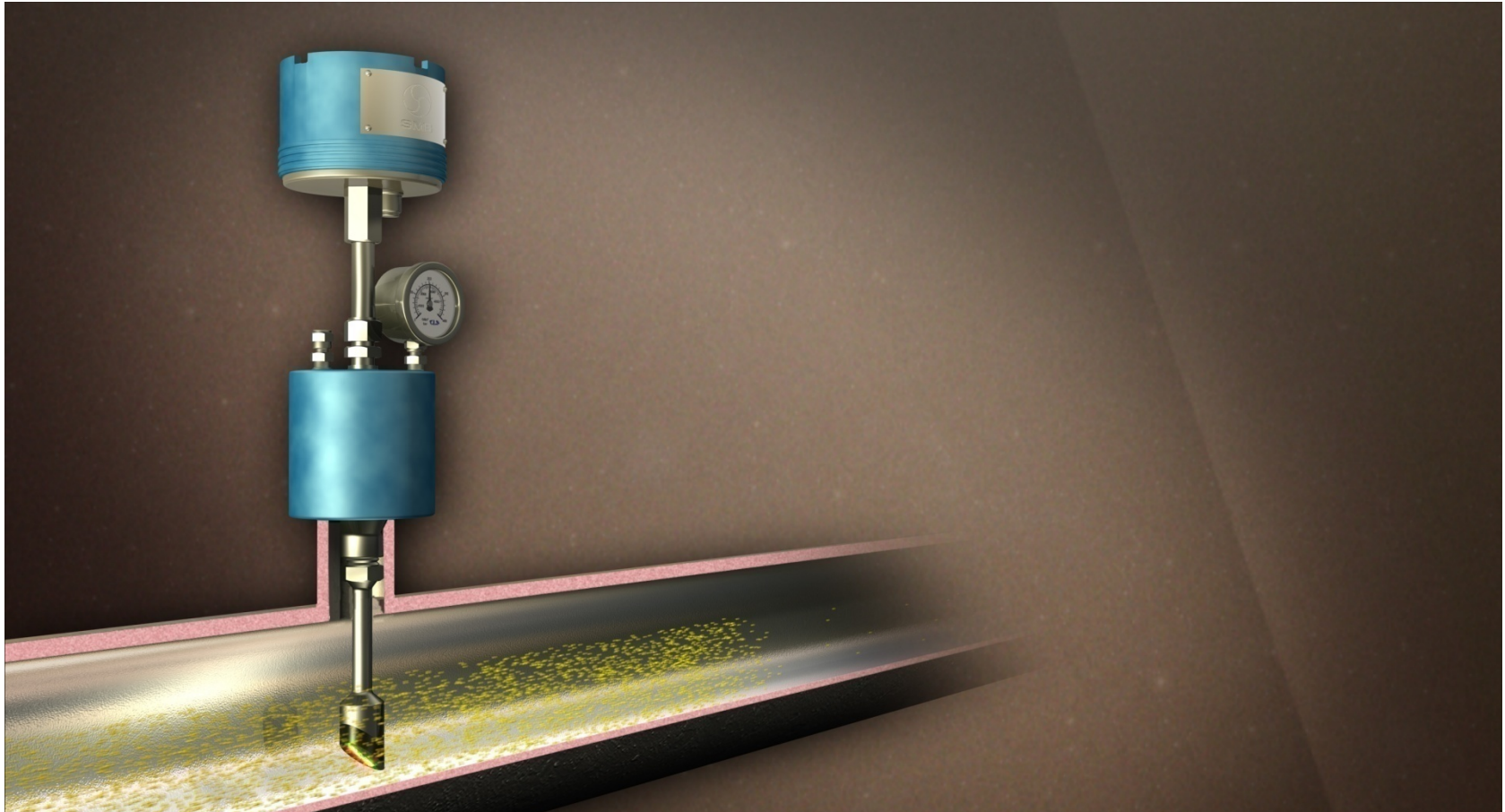
- Elbow Spool – 3” 1502
- High Temp ER Probes - Angle Head Probe
- Pressure Retaining Cap
- High Res Transmitter
- Interface Unit / PC





# Sand Monitoring Technology Video Clips - Intrusive

## Intrusive Sand Monitoring





# Sand Monitoring Technology

## Intrusive Systems

### The Good & The Bad

#### Pros

- **Direct measurement of solids.**
- **Not affected by noise from chokes.**
- **No calibration required.\***

#### Cons

- **Temperature compensation.**
- **Data not instantaneous.**
- **High level of operator skill required.**
- **Probe length and placement critical.**
- **Potting compound degradation.**
- **Seal failure in access fitting assembly.**
- **Probe with cable feed through a safety issue.**
- **Cost of ongoing maintenance.**
- **Subsea application suitability?**
- **Wax formation on elements.**
- **Erosion of elements in low velocity, high viscosity flows?**



**Well Service**

**Case Studies**

**Sand & Solids Monitoring Applications**





# Sand Monitoring Technology

## Case Study 1 – Frac Operations

### Workscope

- **Completion Programme**
- **Wireline Conveyed Perforation**
- **Fracture Stimulation**
- **Pre –WT Clean Up**
- **CT Operations**
- **WT Clean UP**

### Solids Monitoring Equipment

- **Acoustic – Upstream Sand Trap**
- **Acoustic – Downstream Choke**
- **Intrusive – Downstream Choke, Inlet to Heat Exchanger**

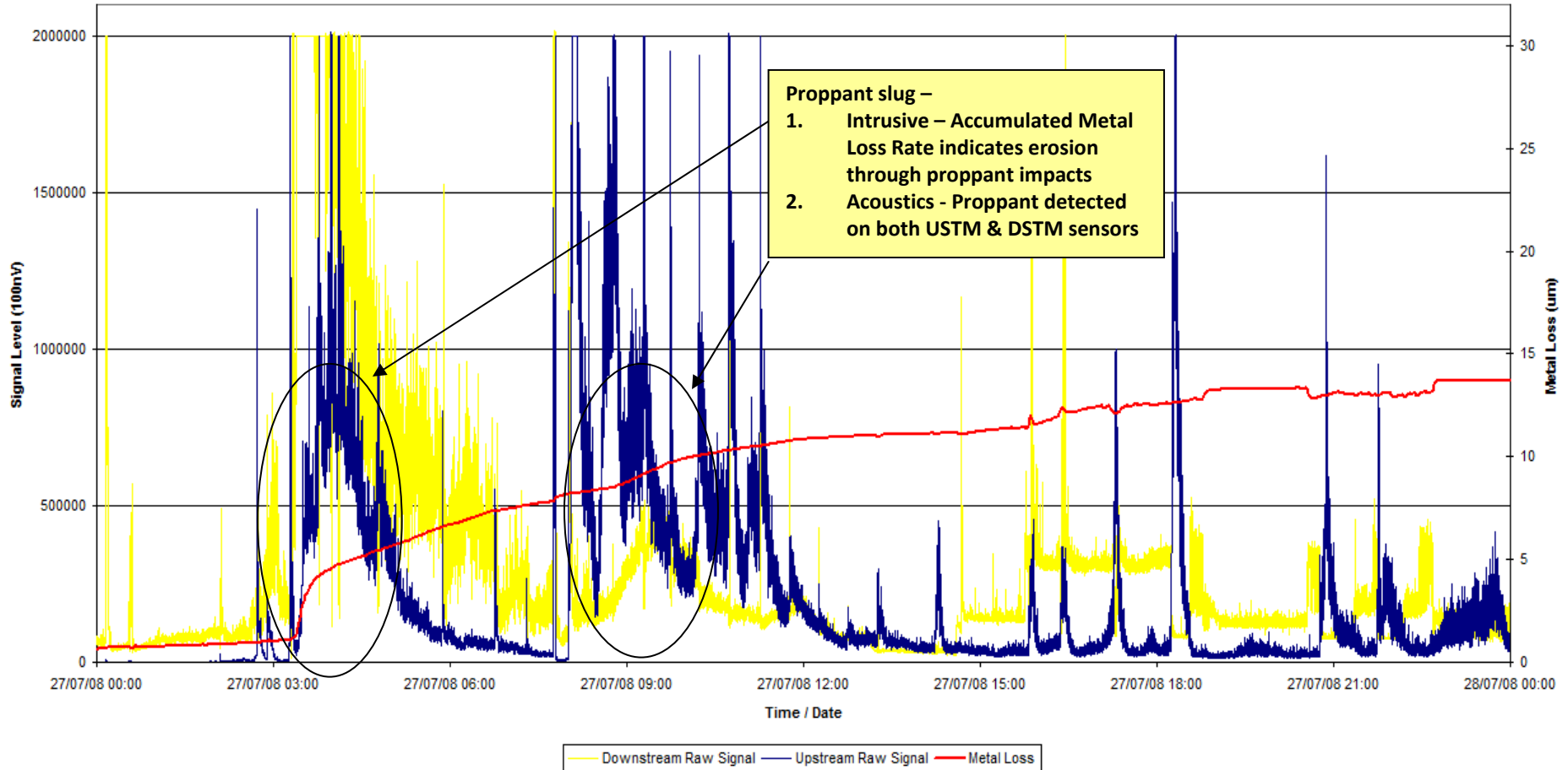
### Objective for Use

- **Confirm well clean of proppant / sand**
- **Identify solids trends during highly erosive service**
- **Prove sand filter integrity**



# Intrusive / Acoustic Detector Data Frac Proppant Clean Up

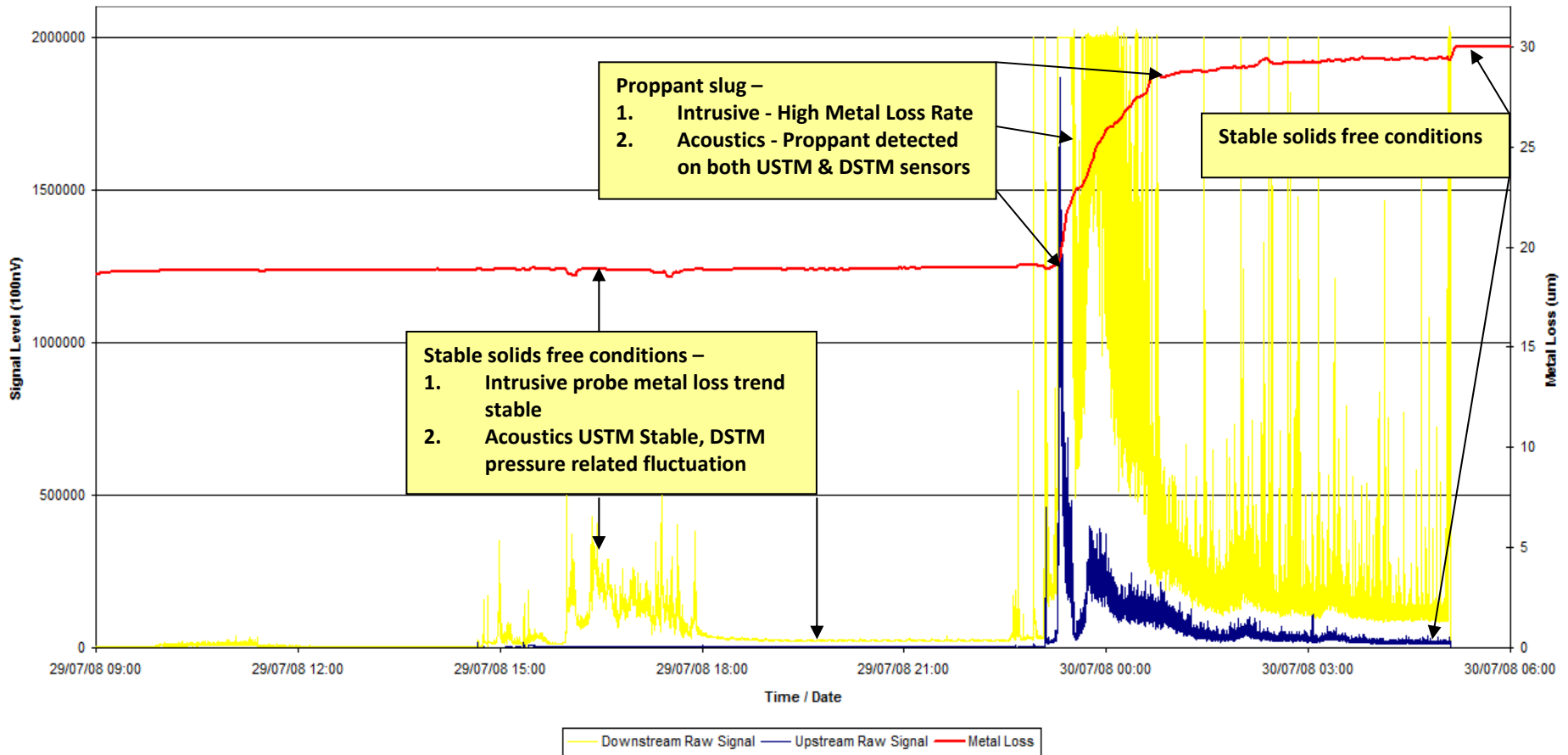
Upstream & Downstream Raw Signal & Metal Loss Vs Time





# Intrusive / Acoustic Detector Data Frac Proppant Main Flow

Upstream & Downstream Raw Signal & Metal Loss Vs Time





# Sand Monitoring Technology

## Case Study 2 – Well Test

### Workscope

- **Completion Programme**
- **CT Operations**
- **WT Clean UP**

### Solids Monitoring Equipment

- **Acoustic – Upstream Sand Trap**
- **Acoustic – Downstream Choke**

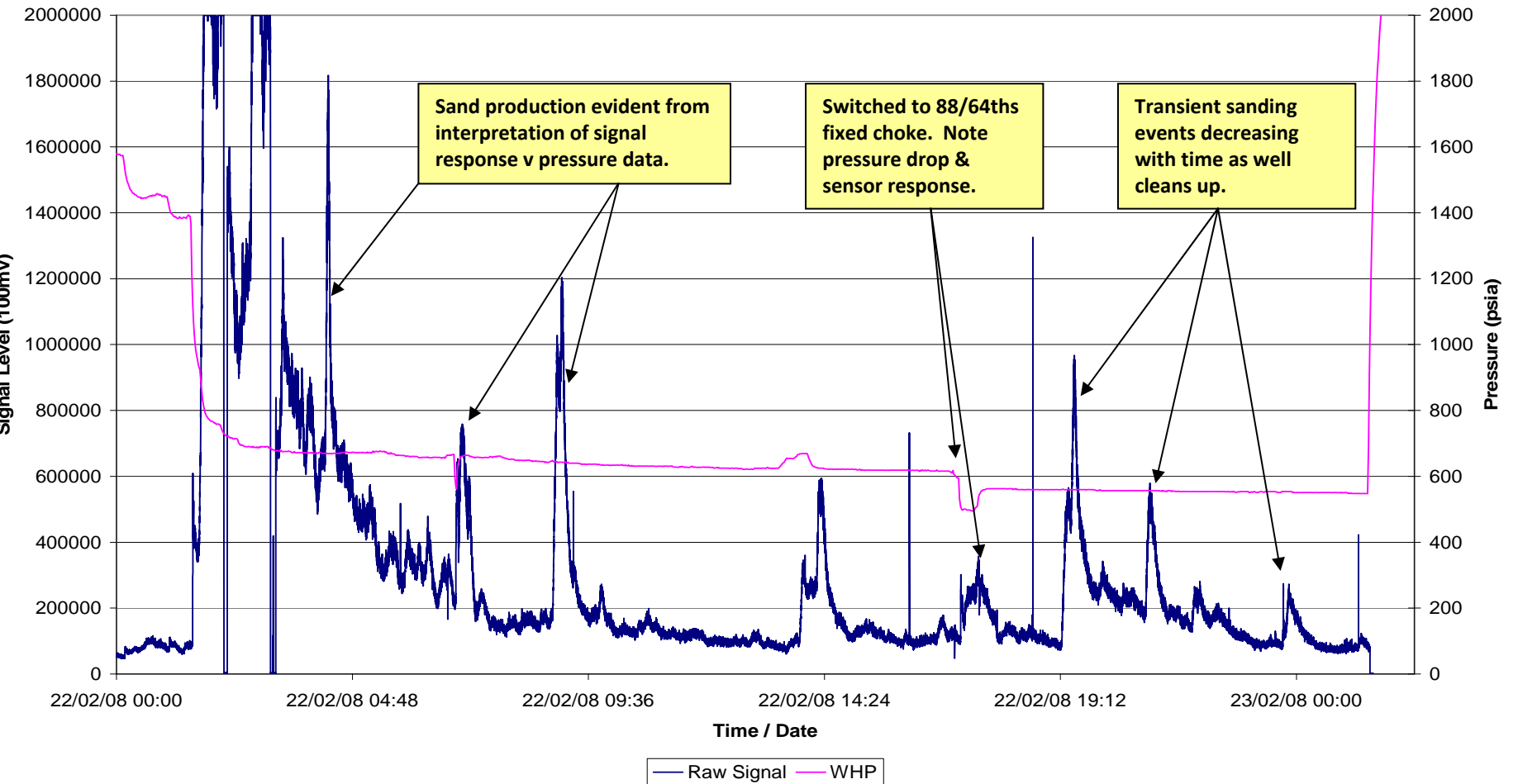
### Objective for Use

- **Confirm well clean of sand / solids**
- **Confirm completion screen integrity - identify transient solids trends**
- **Prove sand filter integrity**



# Acoustic Detector Data Well Test - Completion Clean Up

Raw Signal vs WHP





# Sand Monitoring Technology

## Case Study 3 – Production Test

### Workscope

#### Workover Programme

- Wireline Conveyed Perforation
- Clean Up

### Solids Monitoring Equipment

- Single Acoustic – Flowline monitoring

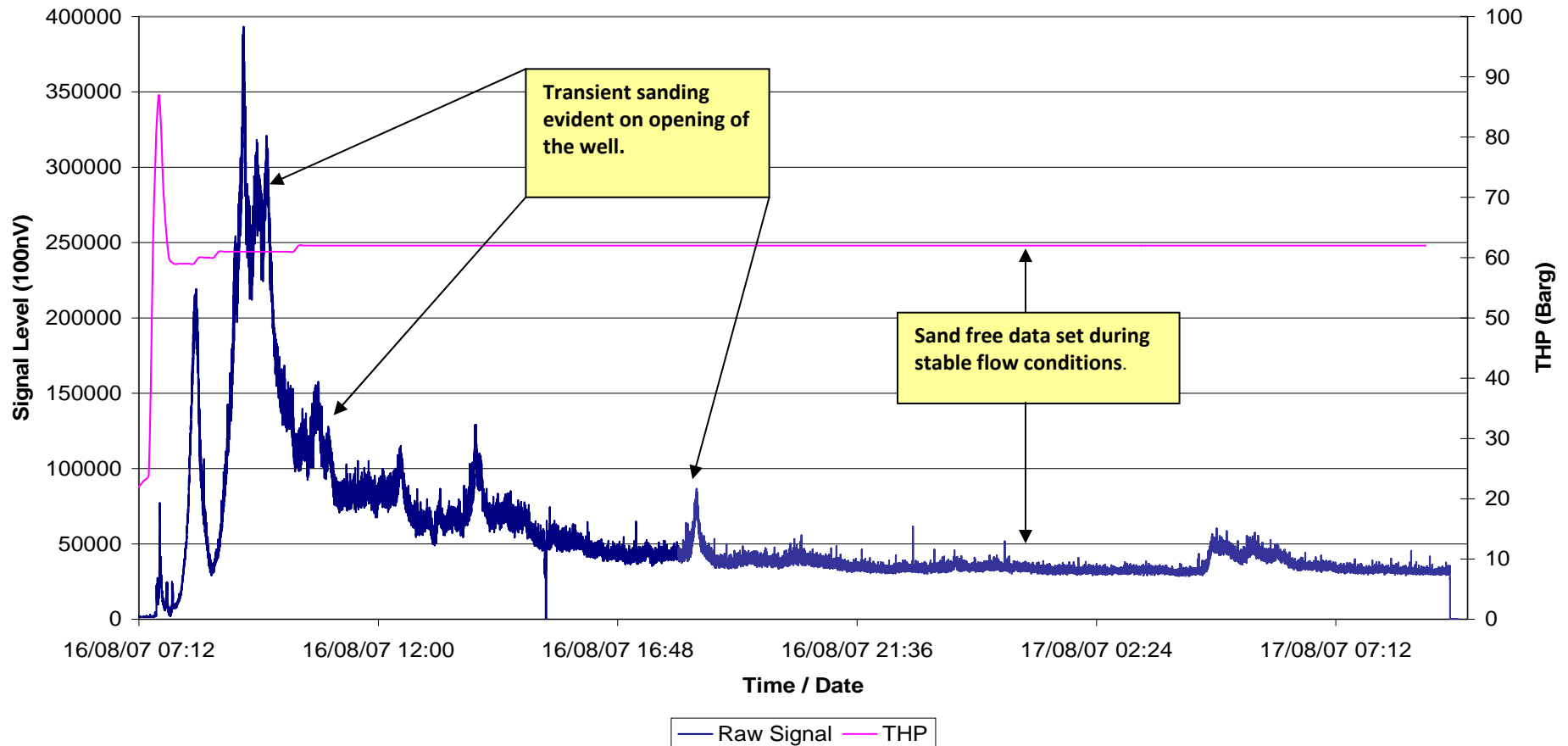
#### Objective for Use

- Identify solids trends post perforation during increased flow rates
- Confirm 'sand free' operating conditions



# Acoustic Detector Data Production Test – Perforation Clean Up

Raw Signal Vs THP





# Sand Monitoring Technology

## Case Study 4 – CT Scale Milling / Sand Bridge

### Workscope

#### Workover Programme

- CT Operations
- Scale Milling
- Sand Bridge clean out

### Solids Monitoring Equipment

- Acoustic – Downstream Choke

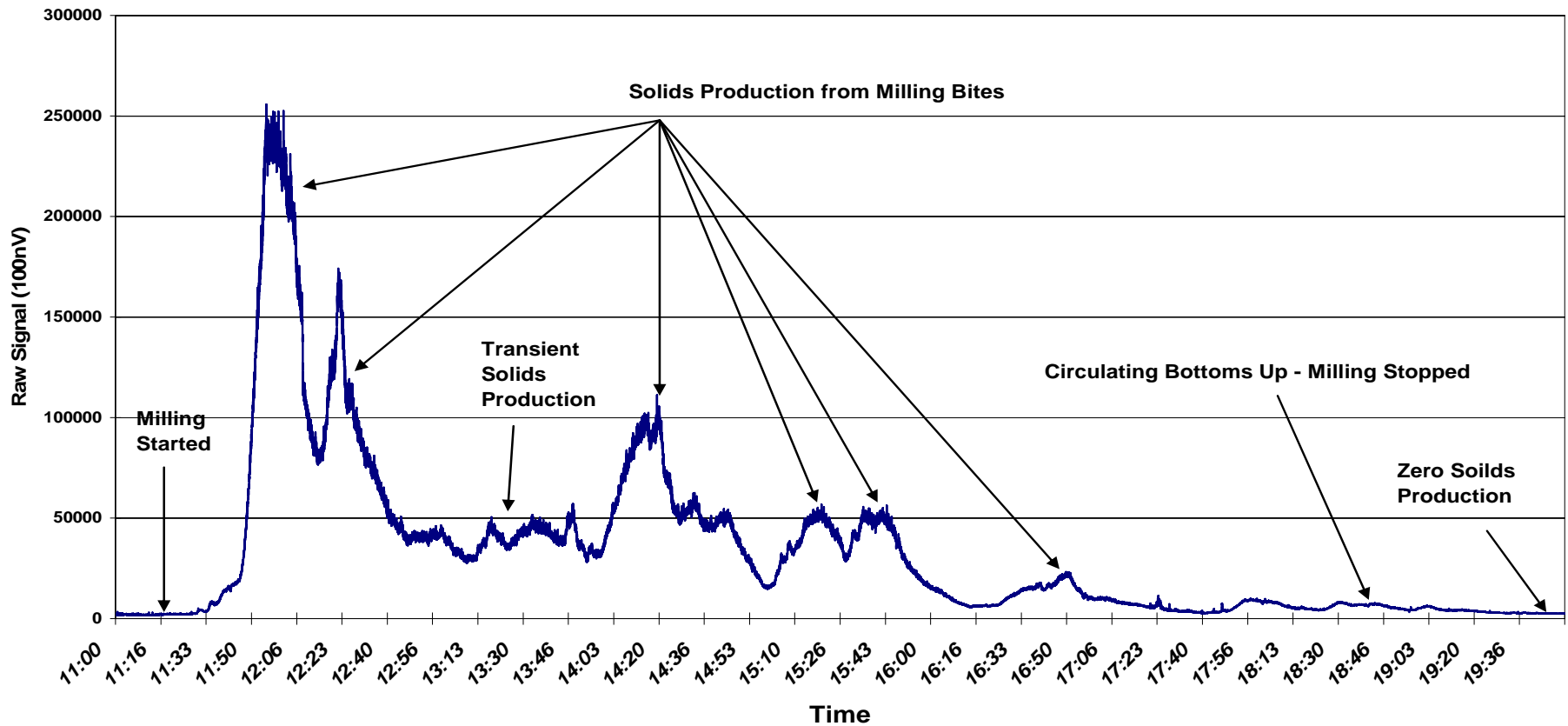
#### Objective for Use

- Identify & confirm solids returns at surface
- Confirm effective hole cleaning to prevent stuck pipe
- Identify solids trends - Well clean of solids at increased flow rates



# Acoustic Detector Data CT Scale Milling / Sand Bridge Clean Out

Scale Milling Ops -08092005





# Summary

## Well Services

### Sand & Solids Monitoring Technology

#### Workscope Applications

Variety of Well Service activities where real time identification of solids adds value:

- Well Test
- Frac Ops
- Production Tests
- CT Work Over
- UBD

#### Solids Monitoring Equipment

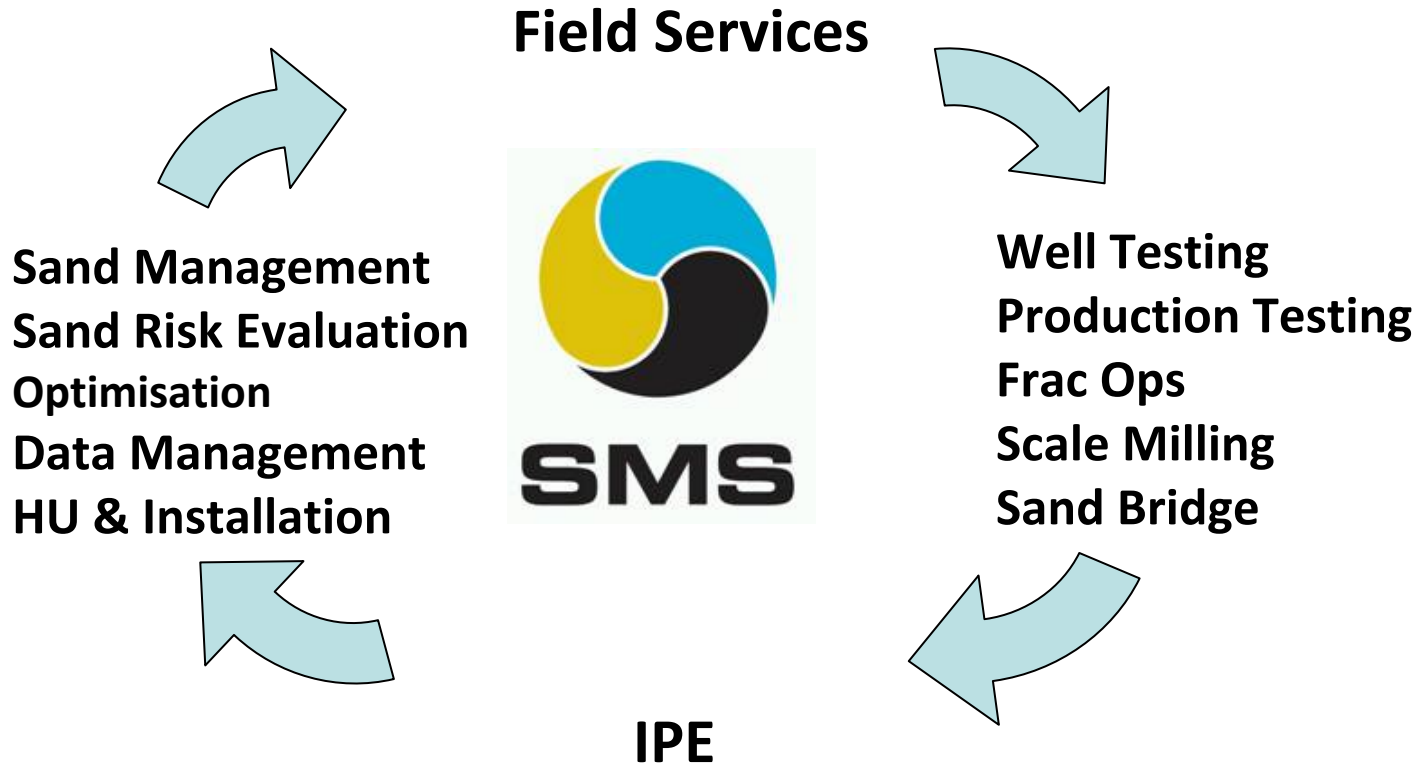
Field Proven Options for Real Time Solids Monitoring:

- External Acoustic Sensors
- Intrusive High Res. ER probes
- Combined intrusive – acoustic packages for complete coverage



# Where SMS Add Value

## Single Source Sand Solution



- **Unique Independent Knowledge of Acoustic & Intrusive Systems**



Contact details.....

## **Sand Monitoring Services Ltd**

### **Head Quarters**

**Sand Monitoring Services Ltd  
Energy Development Centre  
Aberdeen Science & Energy Park  
Claymore Drive  
Bridge of Don  
Aberdeen, AB23 8GX  
T: +44 (0) 1224 853 525  
F: +44 (0) 1224 707 999  
[info@sand-monitoring.co.uk](mailto:info@sand-monitoring.co.uk)  
[www.sand-monitoring.co.uk](http://www.sand-monitoring.co.uk)**

### **Malaysian Agent**

**Delcom Services SDN. BHD.  
No.2 Jalan Bangsar Utama 9  
Bangsar Utama  
59000 Kuala Lumpur**